



Robin Engines

Model EC10
for **SAKAI**[®]

PARTS CATALOG

Spec.No.EC100DD6770

 **FUJI HEAVY INDUSTRIES LTD.**

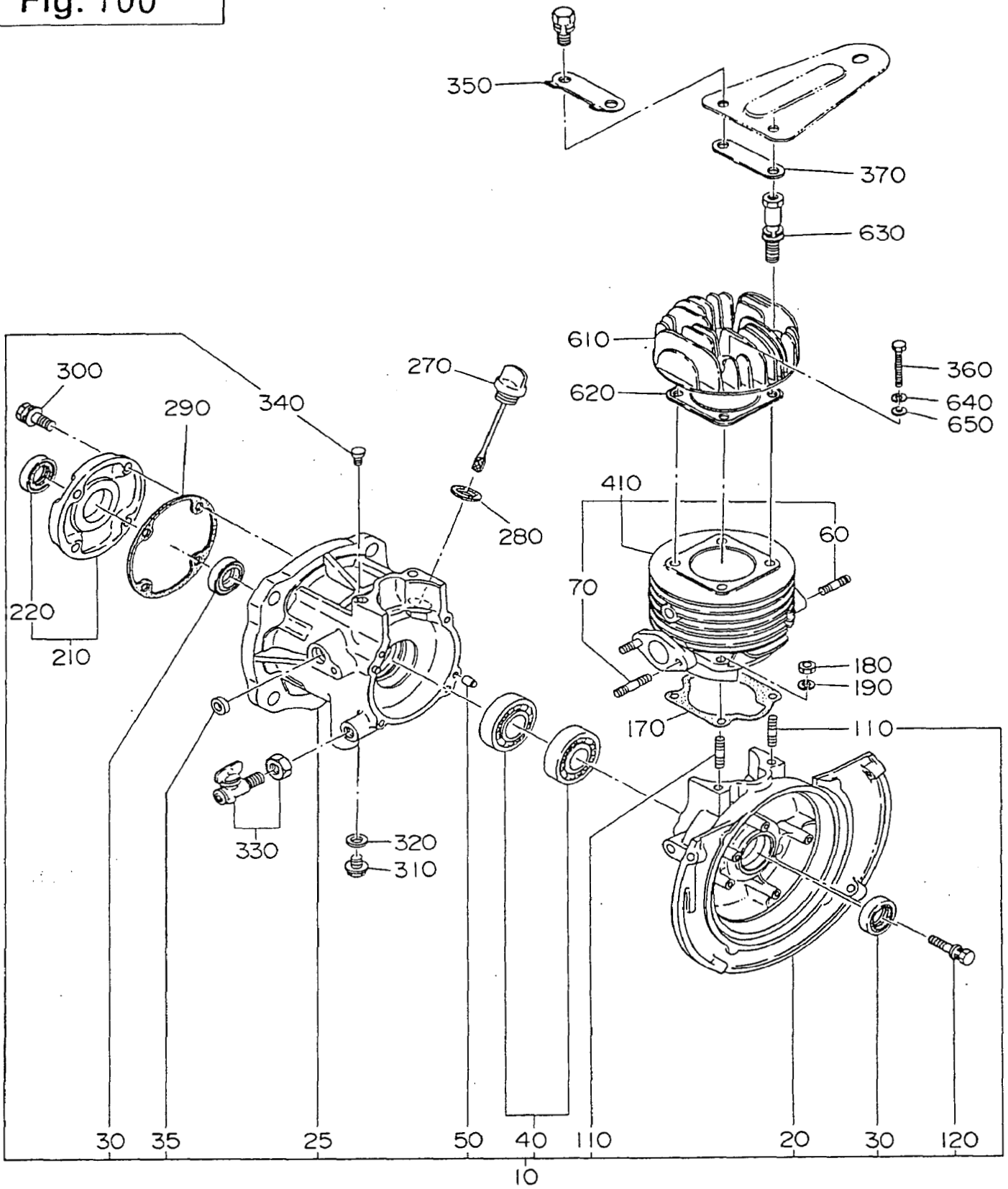
JULY 1990

ISSUE EMD-EP5319

TABLE OF CONTENTS

1. CRANKCASE GROUP
2. CRANKSHAFT, PISTON GROUP
3. INTAKE, EXHAUST GROUP
4. GOVERNOR, OPERATION GROUP
5. COOLING, STARTING GROUP
6. FUEL, LUBRICANT GROUP
7. ELECTRIC DEVICE GROUP
9. ACCESSORIES GROUP
10. PARTS TO BE SHIPPED LOOSE GROUP

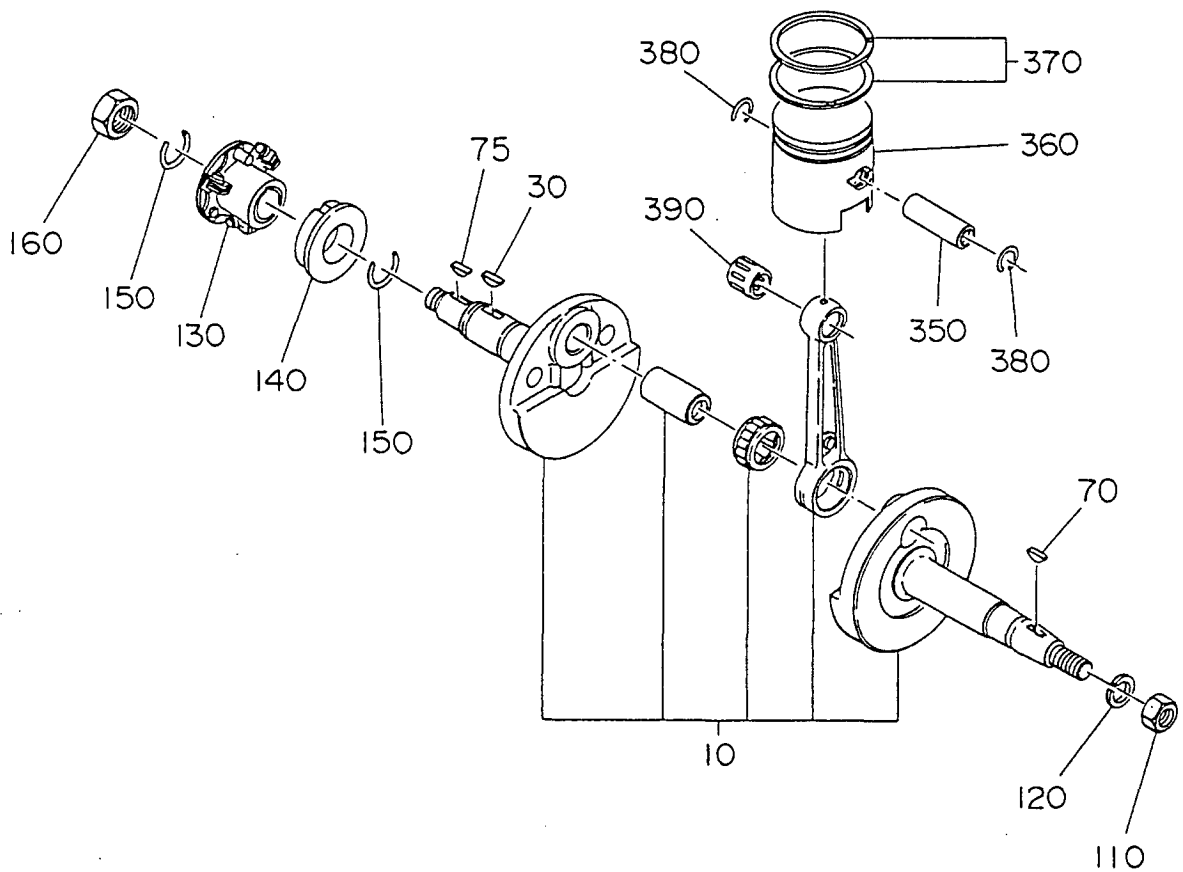
Fig. 100



1 CRANKCASE GROUP

REF.	PART NUMBER	PART NAME	QTY	REMARKS	CODE NO. FROM-TO	INTERCHANGEABLE PART NUMBER	UNIT PRICE	FIG.
10	106-10711-01	CRANKCASE CP	1		-			100
20	106-10121-03	CRANKCASE 1	1		-			100
25	106-10701-23	CRANKCASE 2	1		-			100
30	044-02000-10	OIL SEAL	2		-	044-02000-30		100
35	044-00800-10	OIL SEAL	1		-			100
40	060-02000-20	BALL BEARING	2		-			100
50	031-00600-10	DOWELL PIN	2		-			100
60	001-31083-01	STUD	2		-			100
70	001-31063-01	STUD	2		-			100
110	010-50700-10	STUD	4		-			100
120	013-00601-00	BOLT AND WASHER AY	4		-			100
170	106-15001-23	GASKET (CYLINDER)	1		-			100
180	017-00700-20	NUT	4		-			100
190	020-30700-10	SPRING WASHER	4		-			100
210	106-11601-11	CRANKCASE COVER CP	1		-			100
220	044-02000-30	OIL SEAL	1		-			100
270	106-63606-01	OIL GAUGE CP	1		-	106-63607-01		100
280	021-01600-10	GASKET	1		-			100
290	106-15002-03	GASKET (CASE COVER)	1		-			100
300	013-00601-30	BOLT AND WASHER AY	4		-			100
310	040-10800-10	PLUG	1		-			100
320	021-00800-10	GASKET	1		-			100
330	064-30001-01	DRAIN COCK	1		-			100
340	067-00701-00	AIR BREATHER	1		-			100
350	105-65101-21	LOCK WASHER	1		-			100
360	010-30800-10	BOLT	2		-			100
370	106-35302-01	SPACER	1		-			100
410	106-12405-11	CYLINDER CP	1		-			100
610	106-13001-13	CYLINDER HEAD	1		-			100
620	106-15101-11	GASKET CP (HEAD)	1		-			100
630	013-00800-71	BOLT AND WASHER AY	2		-			100
640	003-20080-00	SPRING WASHER	2		-			100
650	003-10080-00	WASHER	2		-			100
960	106-99001-07	GASKET SET	1		-			100

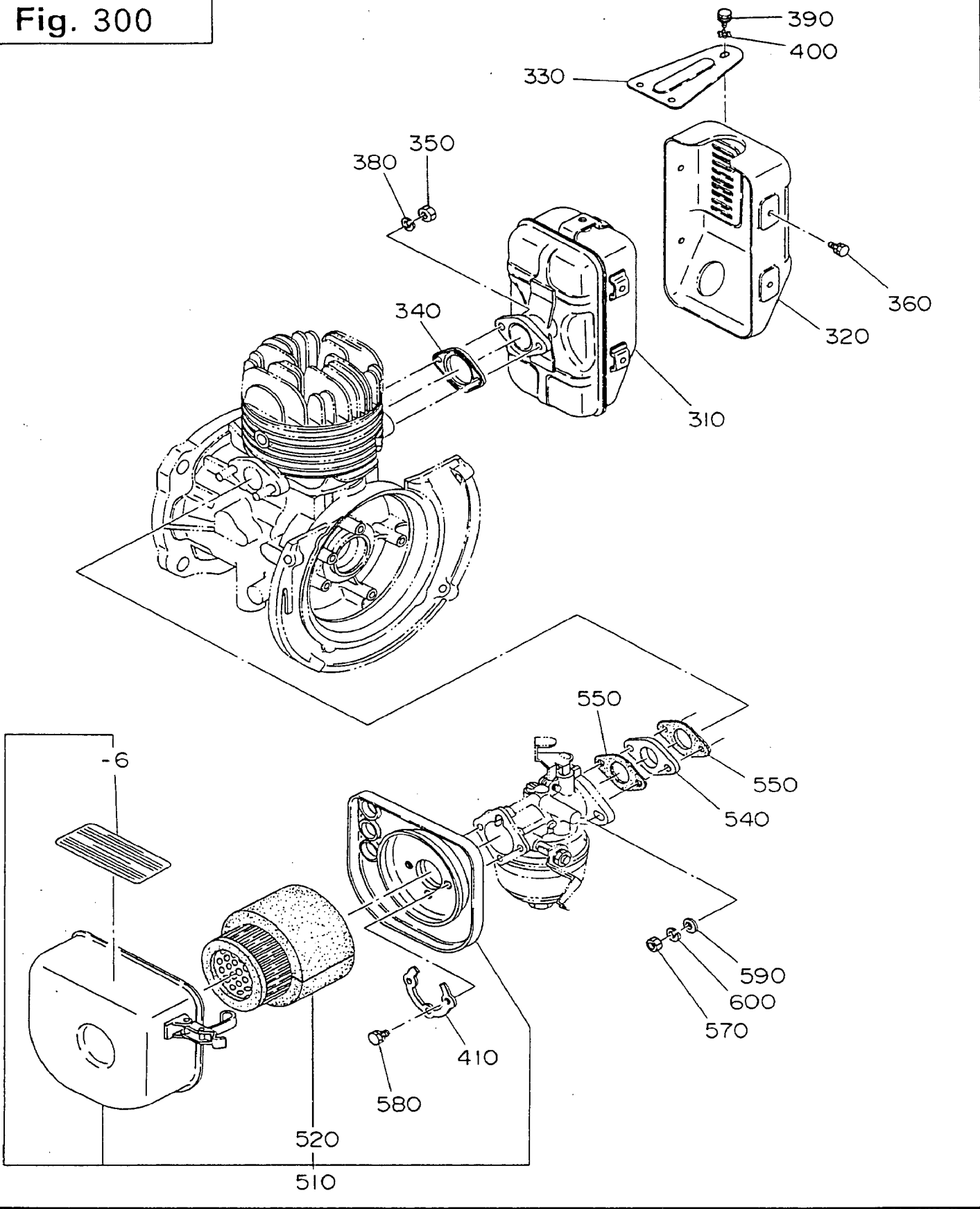
Fig. 200



2 CRANKSHAFT, PISTON GROUP

REF.	PART NUMBER	PART NAME	QTY	REMARKS	CODE NO. FROM-TO	INTERCHANGEABLE PART NUMBER	UNIT PRICE	FIG.
10	106-20502-00	CRANKSHAFT AY	1		-			200
30	032-30400-10	WOODRUFF KEY	1		-			200
70	005-32042-01	WOODRUFF KEY	1		-			200
75	005-32042-01	WOODRUFF KEY	1		-			200
110	017-01000-10	NUT	1		-			200
120	003-20100-00	SPRING WASHER	1		-			200
130	106-41702-01	GOVERNOR PLATE CP	1		-			200
140	106-41903-03	GOVERNOR SLEEVE	1		-			200
150	056-52000-20	CLIP	2		-			200
160	017-31200-10	LOCK NUT	1		-			200
350	106-23301-23	PISTON PIN	1		-			200
360	106-23401-11	PISTON COMPL	1	STD	-			200
	106-23402-11	PISTON CP 0.25	## 1	0.25 OVERSIZE	-			200
	106-23403-11	PISTON CP 0.5	## 1	0.50 OVERSIZE	-			200
370	106-23501-07	RING SET STD	1	STD	-			200
	106-23502-07	RING SET 0.25	1	0.25 OVERSIZE	-			200
	106-23503-07	RING SET 0.50	1	0.50 OVERSIZE	-			200
380	056-51200-10	CLIP	2		-			200
390	061-01200-10	NEEDLE BEARING	1		-			200
					-			200

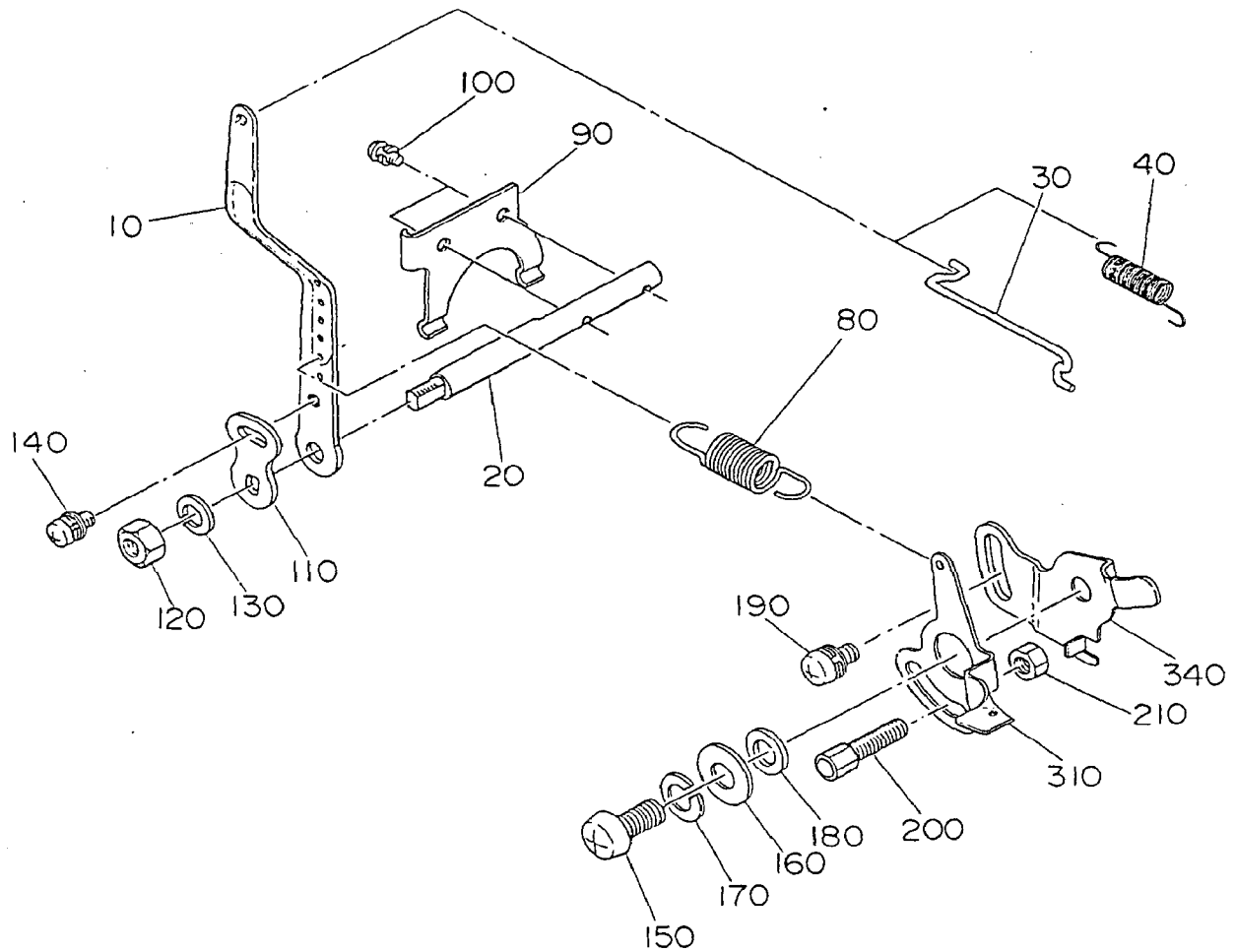
Fig. 300



3 INTAKE, EXHAUST GROUP

REF.	PART NUMBER	PART NAME	QTY	REMARKS	CODE NO. FROM-10	INTERCHANGEABLE PART NUMBER	UNIT PRICE	FIG.
310	106-30116-31	MUFFLER CP	1		-			300
320	106-34251-21	MUFFLER COVER CP	1		-			300
330	106-35601-31	BRACKET (MUFFLER)	1		-			300
340	106-35102-01	GASKET CP (EXHAUST)	1		-			300
350	002-19080-00	NUT	2		-			300
360	001-16061-00	BOLT & WASHER AY	4		-			300
380	003-20080-00	SPRING WASHER	2		-			300
390	001-13081-60	BOLT & WASHER AY	1		-			300
400	020-50800-11	LOCK WASHER	1		-			300
410	106-35201-01	LOCKWASHER (CLEANER)	1		-			300
510	106-32717-20	AIR CLEANER AY	1		-			300
- 6	106-32738-08	LABEL	1		-			300
520	106-32704-07	ELEMENT SET	1		-			300
540	106-32902-03	INSULATOR	1		-			300
550	106-35001-03	GASKET (INSULATOR)	2		-			300
570	002-17060-00	NUT	2		-			300
580	001-13051-00	BOLT AND WASHER AY	3		-			300
590	003-10060-00	WASHER	2		-			300
600	003-20060-00	SPRING WASHER	2		-			300

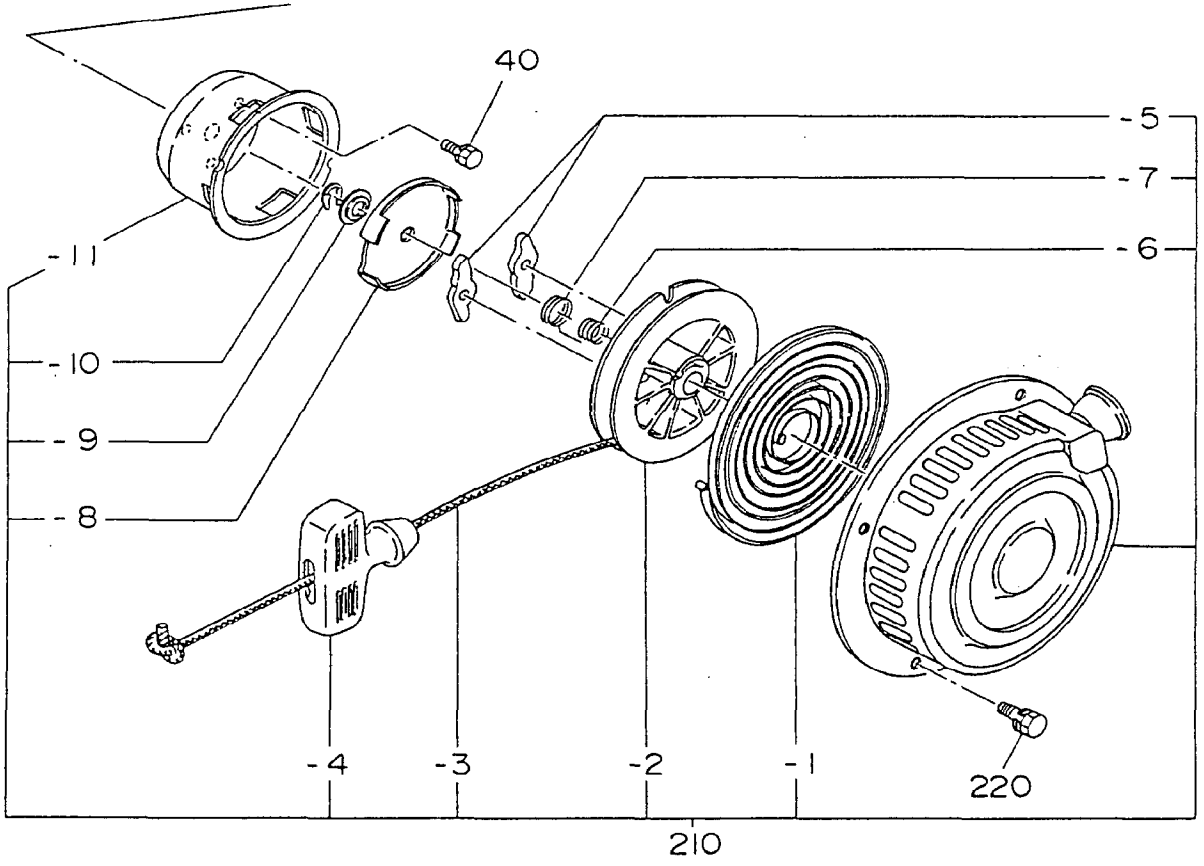
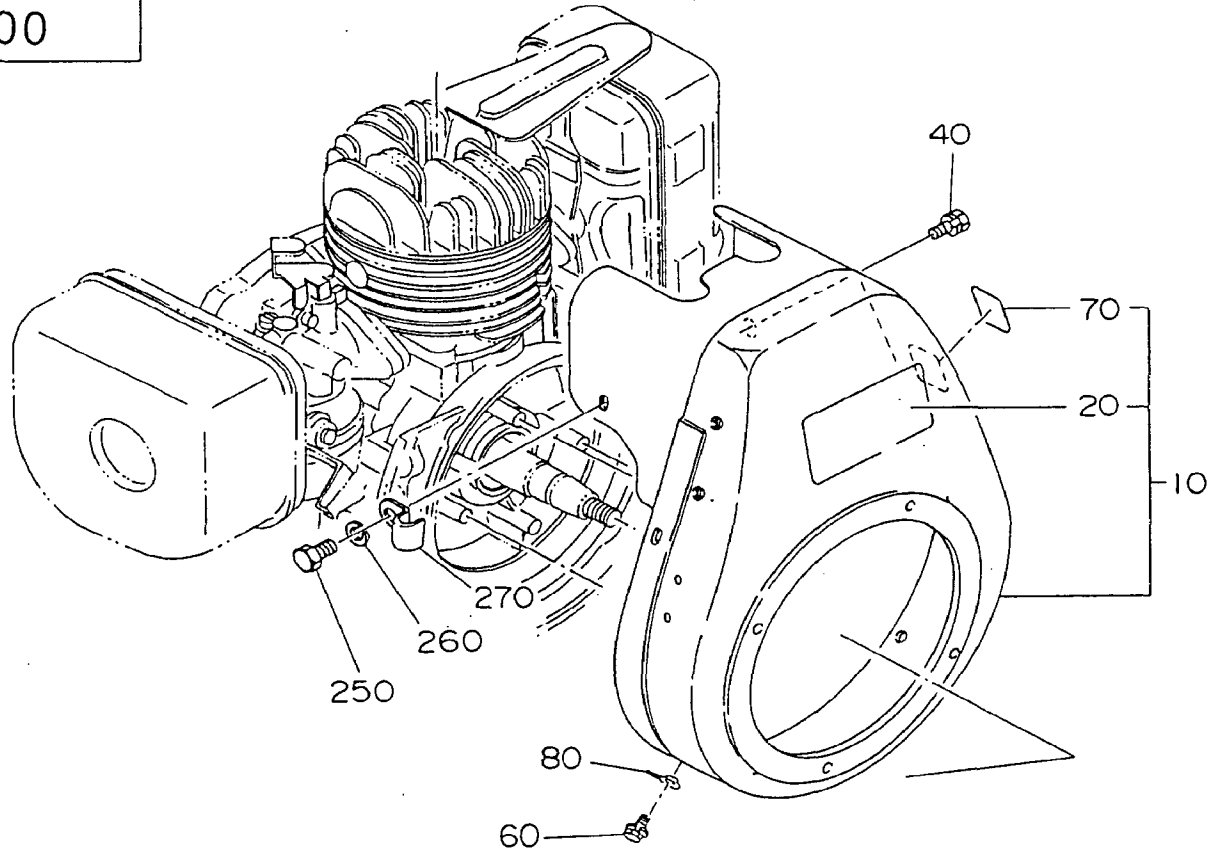
Fig. 400



4 GOVERNOR, OPERATION GROUP

REF.	PART NUMBER	PART NAME	QTY	REMARKS	CODE NO. FROM-TO	INTERCHANGEABLE PART NUMBER	UNIT PRICE	FIG.
10	106-42306-01	GOVERNOR LEVER	1		-			400
20	106-42201-03	GOVERNOR SHAFT	1		-			400
30	105-42701-11	GOVERNOR ROD	1		-			400
40	106-42801-13	ROD SPRING	1		-			400
80	105-42501-03	GOVERNER SPRING	1		-			400
90	106-42101-13	GOVERNOR YOKE	1		-			400
100	004-35040-60	SCREW & WASHER AY	2		-			400
110	157-42401-03	ADJUSTING PLATE	1		-			400
120	002-17060-00	NUT	1		-			400
130	003-20060-00	SPRING WASHER	1		-			400
140	004-36040-80	SCREW AND WASHER AY	1		-			400
150	004-31081-60	SCREW, PANHEAD	1		-			400
160	003-11080-00	WASHER	1		-			400
170	003-20080-00	SPRING WASHER	1		-			400
180	023-00800-60	SPACER	1		-			400
190	004-36061-00	SCREW AND WASHER AY	1		-			400
200	014-90600-40	ADJUSTING SCREW	1		-			400
210	002-17060-00	NUT	1		-			400
310	106-43302-01	GOVERNOR CONTROL	1		-			400
340	106-43504-00	STOP PLATE	1		-			400

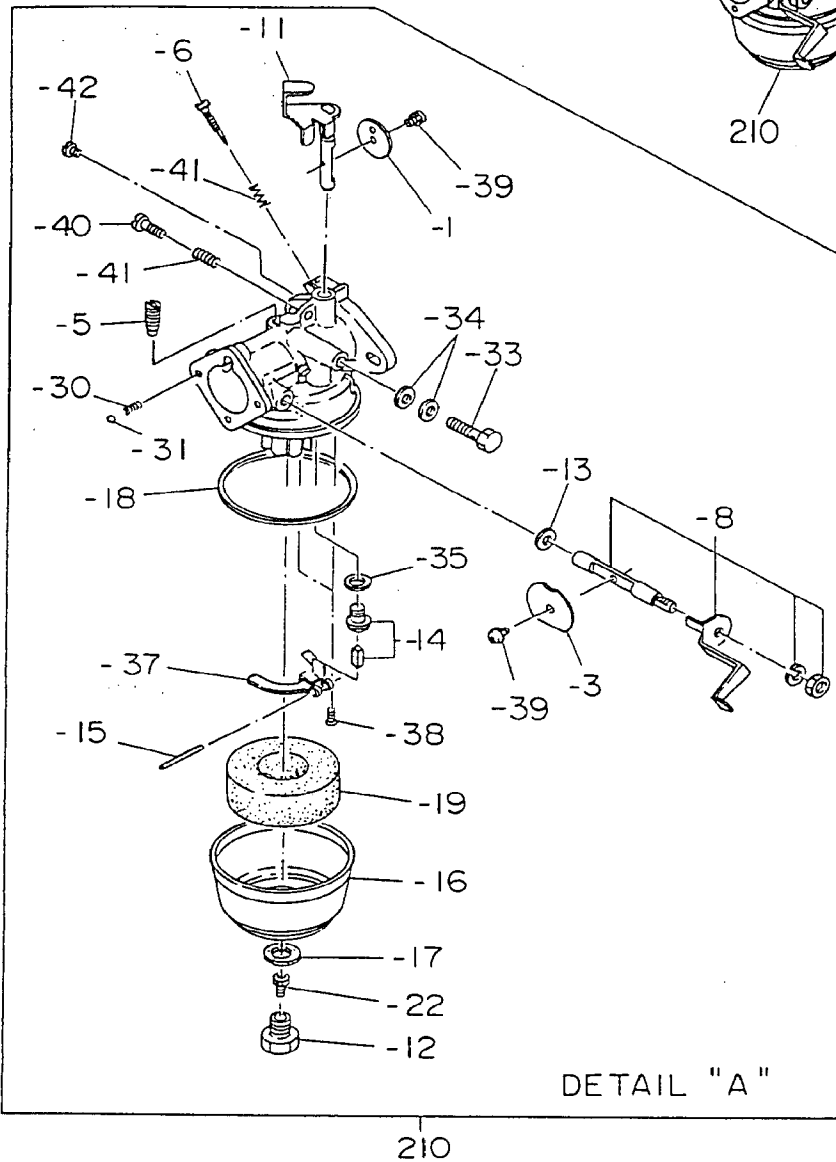
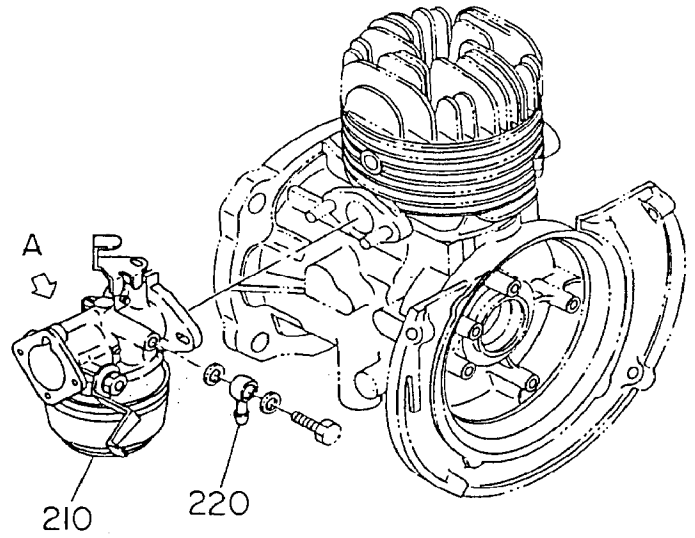
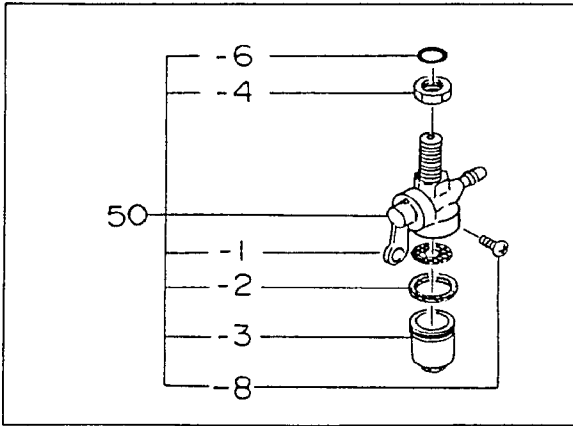
Fig. 500



5 COOLING, STARTING GROUP

REF.	PART NUMBER	PART NAME	QTY	REMARKS	CODE NO. FROM-TO	INTERCHANGEABLE PART NUMBER	UNIT PRICE	FIG.
10	106-51831-01	BLOWER HOUSING CP	1		-			500
20	106-91706-03	LABEL(TRADE MARK)	1		-	106-91708-03		500
40	001-10061-20	BOLT AND WASHER AY	4		-			500
60	001-13061-20	BOLT AND WASHER AY	4		-	001-14061-20		500
70	106-91811-23	LABEL(ENGINE NAME)	1		-			500
80	020-50600-10	LOCK WASHER	3		-			500
210	106-50813-10	RECOIL STARTER AY	1		-			500
- 1	106-50116-08	SPIRAL SPRING	1		-			500
- 2	106-50184-28	REEL CP	1		-			500
- 3	106-50113-08	STARTER ROPE LIGHT	1		-			500
- 4	206-50101-08	STARTER KNOB	1		-			500
- 5	106-50128-18	RATCHET	2		-			500
- 6	106-50132-08	FRICTION SPRING	1		-			500
- 7	106-50136-18	RETURN SPRING	1		-			500
- 8	106-50144-18	FRICTION PLATE	1		-			500
- 9	106-50185-18	THRUST WASHER	1		-			500
- 10	106-50186-08	CLIP	1		-			500
- 11	106-50183-28	STARTER PULLEY	1		-			500
220	001-13061-20	BOLT AND WASHER AY	4		-	001-14061-20		500
250	001-65081-20	BOLT	1		-			500
260	003-20080-00	SPRING WASHER	1		-			500
270	106-75017-01	CLAMP CP	1		-			500

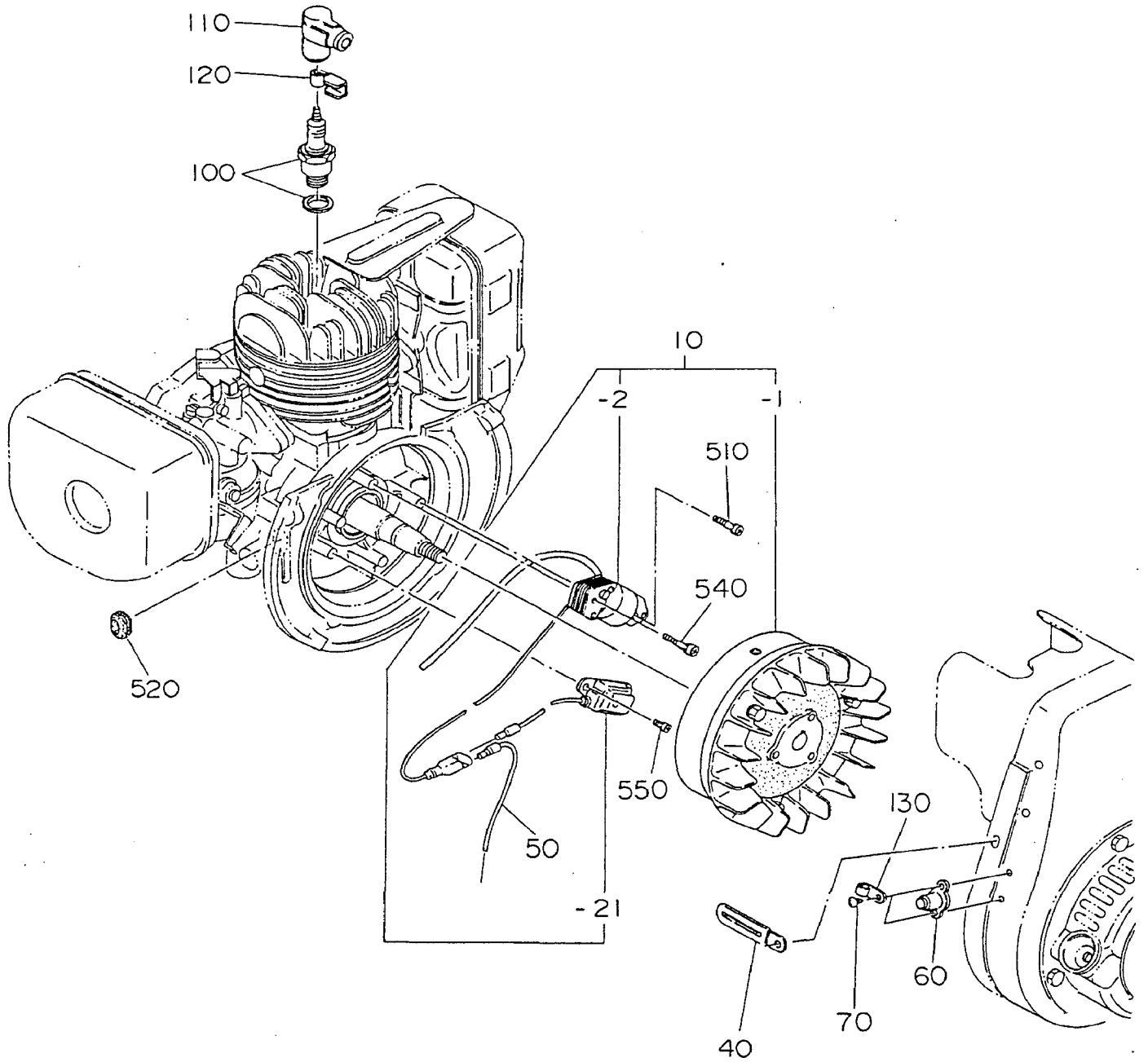
Fig. 600



6 FUEL, LUBRICANT GROUP

REF.	PART NUMBER	PART NAME	QTY	REMARKS	CODE NO. FROM-TO	INTERCHANGEABLE PART NUMBER	UNIT PRICE	FIG.
50	064-20014-01	FUEL STRAINER	1		-	064-20080-00		600
- 1	064-20014-20	SCREEN	1		-			600
- 2	064-20014-30	RUBBER PACKING	1		-			600
- 3	064-20014-10	CUP	1		-			600
- 4	064-20029-20	LOCK NUT	1		-			600
- 6	064-20003-30	O-RING	1		-			600
- 8	064-20027-90	LOCK BOLT	1		-			600
210	106-62516-00	CARBURETOR AY	1		-			600
- 1	106-62538-08	THROTTLE VALVE	1		-			600
- 3	106-62527-08	CHOKE VALVE	1		-			600
- 5	207-62420-08	PILOT JET	1		-			600
- 6	106-62436-08	PILOT SCREW	1		-			600
- 8	106-62553-08	SHAFT AY(CHOKE)	1		-			600
- 11	106-62534-08	SHAFT AY(THROTTLE)	1		-			600
- 12	206-62350-08	BOLT	1		-			600
- 13	106-62392-18	SEAL	1		-			600
- 14	128-62500-08	NEEDLE VALVE	1		-			600
- 15	106-62516-08	FLOAT PIN	1		-			600
- 16	106-62389-08	FLOAT CHAMBER	1		-			600
- 17	206-62431-08	PACKING	1		-			600
- 18	106-62547-08	PACKING	1		-			600
- 19	106-62508-08	FLOAT	1		-			600
- 22	207-62403-08	MAIN JET	1		-			600
- 30	209-62446-08	CHOKE SPRING	1		-			600
- 31	209-62353-08	STEEL BALL	1		-			600
- 33	209-62335-08	BANJO BOLT AY	1		-			600
- 34	207-62345-08	INSERT WASHER	2		-			600
- 35	106-62381-08	WASHER	1		-			600
- 37	106-62511-08	FLOAT ARM	1		-			600
- 38	130-62358-08	SCREW	2		-			600
- 39	209-62351-08	SCREW	2		-			600
- 40	106-62358-08	SCREW	1		-			600
- 41	206-62446-08	SPRING	2		-			600
- 42	106-62357-08	GUIDE SCREW	1		-			600
220	052-10601-00	BANJO	1		-			600

Fig. 700



7 ELECTRIC DEVICE GROUP

REF.	PART NUMBER	PART NAME	QTY	REMARKS	CODE NO. FROM-TO	INTERCHANGEABLE PART NUMBER	UNIT PRICE	FIG.
10	106-70210-10	MAGNETO AY	1		-			700
- 1	106-70175-18	FLYWHEEL CP	1		-			700
- 2	106-70110-18	IGNITION COIL CP	1		-			700
- 21	106-70247-08	TCI UNIT	B 1		-			700
40	150-75201-03	CLAMP	1		-			700
50	106-73301-01	WIRE CP	1		-			700
60	066-20000-11	STOP BUTTON	1		-			700
70	015-00400-10	TAPPING SCREW	2		-	015-00400-50		700
100	065-01400-10	SPARK PLUG	1		-			700
110	065-50001-40	SPARK PLUG CAP	1		-			700
120	065-90000-10	PLUG TERMINAL	1		-			700
130	056-60300-10	CLAMP	1		-			700
510	004-35042-00	SCREW AND WASHER AY	1		-			700
520	024-10700-90	GROMMET	1		-			700
540	004-35042-50	SCREW AND WASHER AY	1		-			710
550	001-13051-00	BOLT AND WASHER AY	2		-			710

Fig. 900

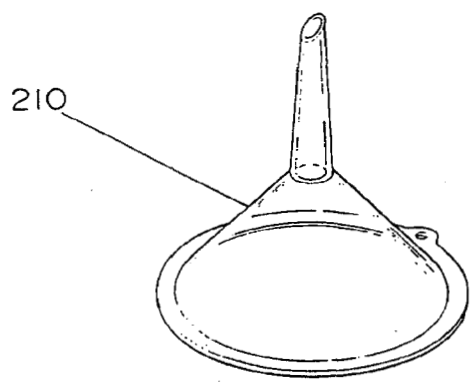
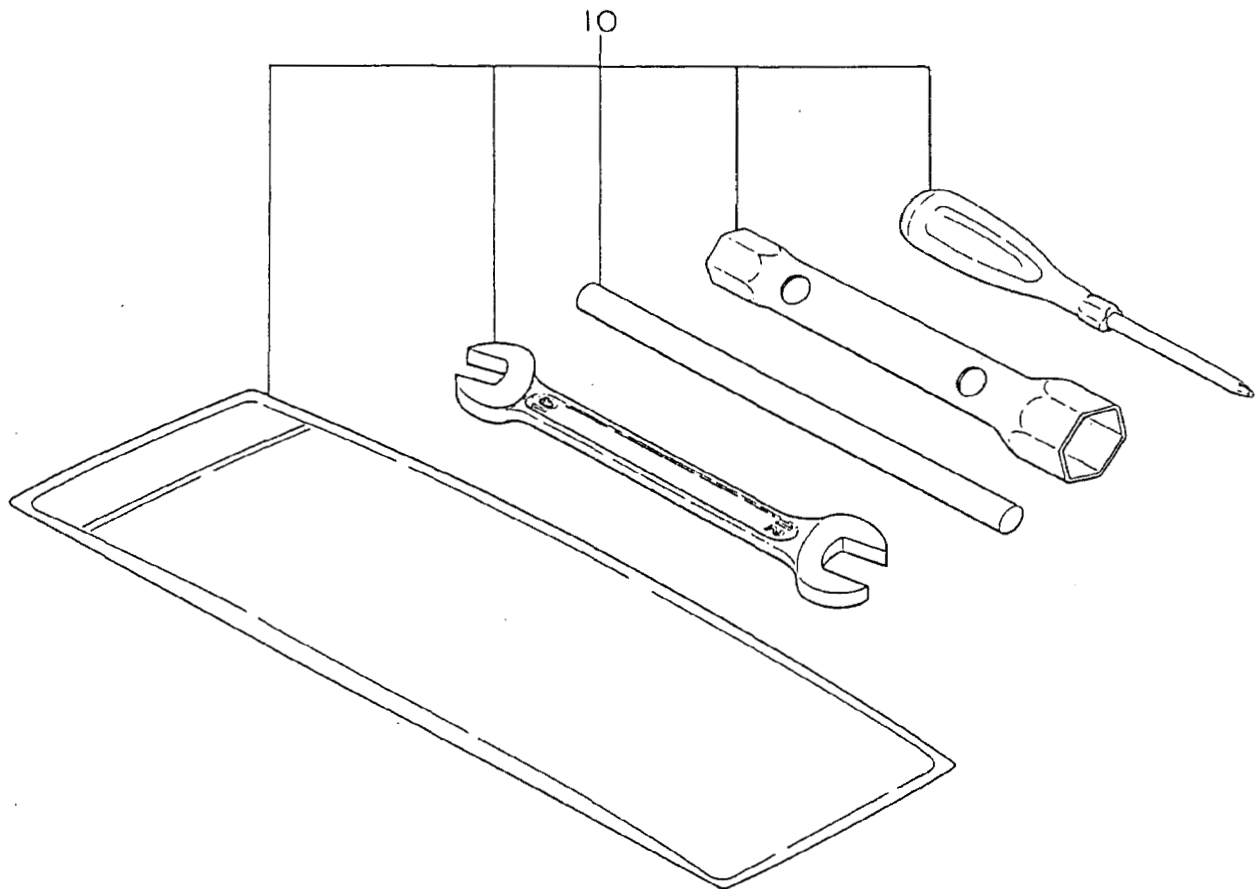
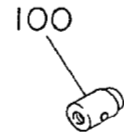
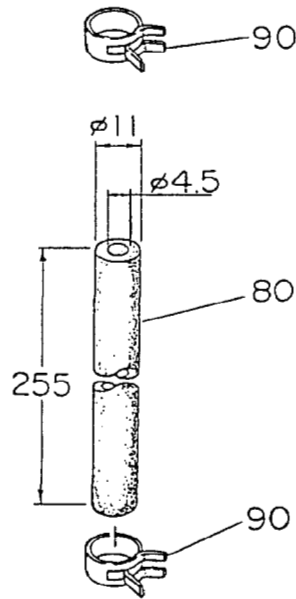
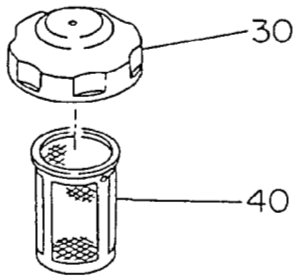
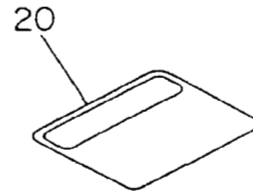
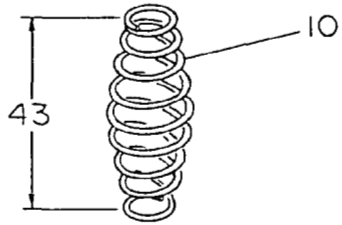


Fig. 1000



10 PARTS TO BE SHIPPED LOOSE GROUP

REF.	PART NUMBER	PART NAME	QTY	REMARKS	CODE NO. FROM-TO	INTERCHANGEABLE PART NUMBER	UNIT PRICE	FIG.
10	083-00000-10	RETURN SPRING	1		-			1000
20	106-92011-03	LABEL(CAUTION)	1		-			1000
30	043-04400-33	FUEL TANK CAP CP	1		-			1000
40	064-13100-10	FUEL FILTER	1		-			1000
80	085-10400-00	RUBBER PIPE	1	4.5X11X255	-			1000
90	056-11000-30	HOSE CLAMP	2		-			1000
100	206-45005-19	WIRE END 2	1		-			1000